

# Rookery South CLP Meeting 26 Notes

Monday 24<sup>th</sup> July 2023 – 6.00 pm, Stewartby Room, Rookery South  
ERF

## Present:

**CLP Members** – Representatives from: Millbrook PM; Wootton resident on behalf of Wootton PC; Lidlington PC; Lidlington Resident; Cranfield and Marston Morteyne Ward Cllr Sue Clark (SC); Brogborough PC, Stewartby PC.

**Observers/Presenters** – Rookery South Ltd: Judith Harper (JH), Neil Grimstone (NG); Central Bedfordshire: Dee Walker (DW); Environment Agency: Neil Goudie (NGd); Facilitator: Bob Fisher

**Apologies:** Paddy Kelly, Anita Taylor, Nick Henderson, Emma d’Avilar, Chris Martin, Grant Sorrell, Stephen Sleight.

## 1. Approval of Notes from Meeting 25 (Revised version)

Notes of the Facility Manager’s Update stated “permit emissions limits do not include start up and shut down periods”. The EA clarified that emissions levels during start up and shut down need to be reported to the EA but emission limits do not apply, except for mass releases.

The notes were approved.

- (i) **Matters Arising from Meeting 25** - Frequency of water monitoring: NG confirmed that water sampling is carried out when there is reason. RSL /Encyclis has never found any contamination.
- (ii) RCV crews are still being dropped off on Green Lane but it appears to be only for a break.

## 2. Facility Manager’s and General Manager’s Update (NG) – see slides 3-5

- Rookery South had just completed a major scheduled annual outage for maintenance. This was phased to keep the facility operational for customers. The plant has worked almost perfectly, no issues with waste quality, consistent calorific value (CV - i.e. energy content) (although slightly lower than expected). Outage was completed ahead of schedule with no surprises. Safety standards were maintained although with higher numbers on site – with a single day maximum of 260 external contractors – reported incidents increased correspondingly
- Community Trust Fund – next phase has not yet opened for applications.
- Community Energy Initiative – number of claims are down at 2550. It was confirmed that residents who missed the claim this time round could still claim next time.
- Planning reports to the Council are up to date.
- Directional signage along the Rookery North Circular path was due to be installed in 3 weeks’ time.
- Attendance at the visitor centre during Q2 was 236 visitors and included Wootton Academy/Kimberley College, Millbrook Parish, Houghton Conquest residents, Bedford Modern School, Bedford Civil Engineering Society, and Ampthill Rotary Club amongst others.

- RSL had received a bill of £2.2m for business rates for the year ending 31 March 2023 following the long assessment process. Rates are chargeable from the date of Commercial Operation.
- RSL has part time vacancies.

### **3. Environment Agency (EA) Update (NGd) See slides 6-13**

The EA apologised for being unable to attend the last meeting and proposes to attend 2 times per year with a written report between. The EA will present what the CLP members want to hear.

Emma D'Avilar is still the monitoring officer. An unannounced visit was made following restart after the outage; there were no issues (including noise and odour).

In the previous 12 months (i.e. January to December 2022) there were only 2 non-compliances. Rookery South is rated as B (on scale A-F) which is better than the EA would expect for a new operator. Above C is considered to be good whereas D is poor and E-F is criminal.

Quarterly monitoring reports are always running behind due to the reporting system. The EA has approved October 2022 to March 2023.

An Operator Monitoring Assessment is planned for August. This would be a deeper audit than the regular assessment and looks at 3<sup>rd</sup> party calibrations and calculations, including data 'drift'.

The UK Government is to include Energy from Waste (EfW in the Emissions Trading Scheme (ETS) from 2028 which will require a lot more monitoring and reporting, as well as carbon capture from large energy generation facilities. NG noted that Encyclis is involved in a carbon capture scheme with its EfW facility at Protos in the northwest. CO<sub>2</sub> would be discharged via a pipeline for storage under the sea bed. Carbon capture at Rookery South would be much more difficult and expensive due to the absence of a local pipeline.

POST MEETING NOTE – Emissions Trading Scheme (ETS) will not *require* that large emitters deploy Carbon capture, usage and storage (CCUS); however, it is likely to become economically attractive in time to do so (driven by the cost of purchasing allowances through ETS). There is separate legislation proposed which will prevent the build of new ERFs without CCUS which is likely to come into force in 2024.

#### Questions & Comments

At the previous meeting Paddy Kelly showed the data on the website which generated lots of questions. Members would like opportunity to repeat this with the EA present to comment and field questions from members. NGd is happy to do so, and this can be arranged for the next meeting.

### **4. LA Update (DW)**

There was not much to report. The Right of Way has been fully dedicated. CBC has carried out monitoring visits and is satisfied with the new landscaping.

Millbrook PM noted that there have been incidences of RCV's travelling through Millbrook village when not on a collection round. This had been reported to CBC.

DW did not know whether CBC had written to the EA as per the previous meeting notes.

## 5. AOB

- (i) A written note was received from MVCRP:  
“As you may be aware, Rail Delivery Group launched a consultation over the closure of Ticket Offices across the country on 5<sup>th</sup> July. Please see <https://www.marstonvalecommunityrail.org.uk/consultation-on-proposed-closure-of-ticket-offices>  
Marston Vale CRP realise that this will impact on the way in which people can get help in buying appropriate tickets and the availability of facilities at stations. We will be responding to the consultation and would welcome comments from CLP members to inform our submission.  
It would also be really helpful if CLP members could respond individually or on behalf of organisations. **The consultation closes on Wednesday 26<sup>th</sup> July 2023.**

Marston Vale Line services are on course to resume in the Autumn. Please see <https://www.marstonvalecommunityrail.org.uk/marston-vale-line-services-due-to-resume-in-autumn-2023>

The new trains (Class 150s) have arrived at Bletchley today with driver training due to start in August.”

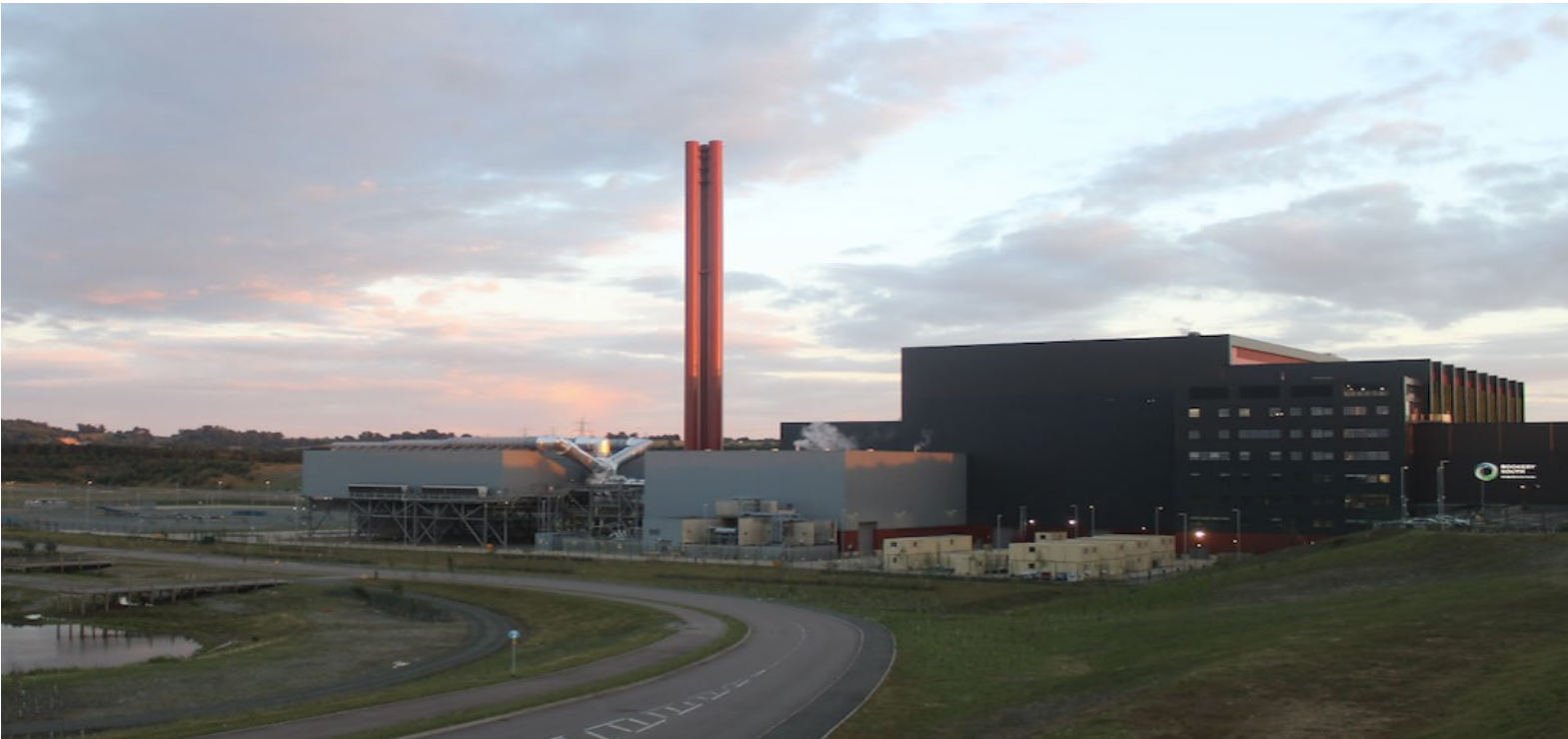
- (ii) Noted that there are Road Closure signs on Green Lane. HGVs and all traffic was being diverted via Broadmead Road due to surface dressing.
- (iii) Tipping hall doors remain open. They are broken again despite having been repaired 3 times this year following electrical faults and HGV drivers hitting the doors.
- (iv) Millbrook PM reported that they thoroughly enjoyed the recent plant tour.
- (v) NGd considered that it is more usual for CLP meetings for operational facilities to drop to twice per year. The CLP agreed that this would be acceptable if the EA could attend and discuss the emissions monitoring data, so the next meeting after October’s would be planned for late March/early April 2024.

## 6. Next Meeting Proposed date **16<sup>th</sup> October 2023**



ROOKERY  
SOUTH

Energy Recovery Facility



Community Liaison  
Panel Meeting  
24<sup>th</sup> July 2023



## **AGENDA**

**Rookery South ERF - Community Liaison Panel**

**Monday July 24<sup>th</sup> 2023**

**Rookery South - Stewartby Room**

- **Introductions & Apologies**
- **Approval of notes from previous CLP Meeting**
- **Matters arising from last meeting**
- **General Manager's Update**
- **Questions**
- **Regulator and Local Authority Feedback**
  - Environment Agency
  - Planning
- **AOB**
- **Date of next CLP meeting – Monday 16<sup>th</sup> October**



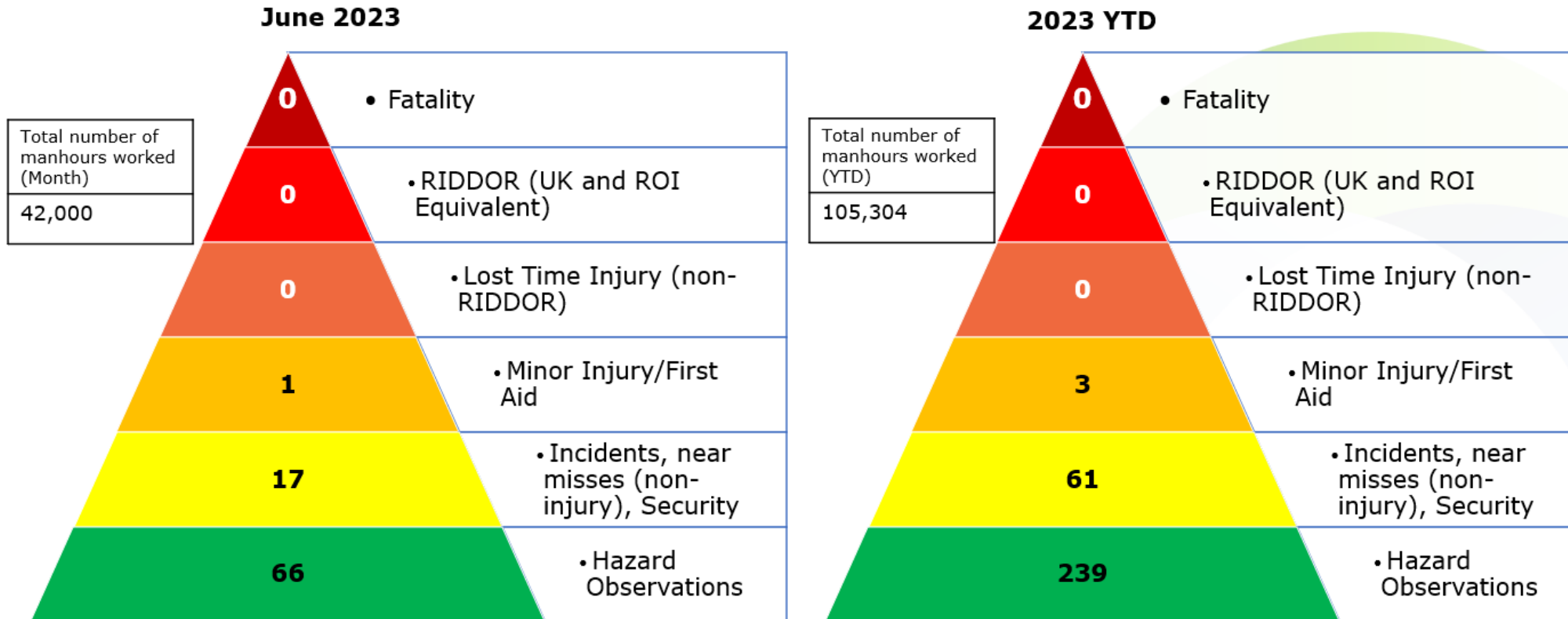
## Operations 2<sup>nd</sup> Quarter Review: May/June/July Planned Outage

---

- Phased programme
- Planned duration
  - Line 1: May 7 – May 22
  - Line 2: Jun 14 – Jun 23
  - Line 3: June 21 – July 4
  - Common outage/turbine: June 21 – June 23
- Actual duration
  - Line 1: May 7 – May 17
  - Line 2: Jun 14 – Jun 27 (due to extended common outage)
  - Line 3: June 20 – July 1
  - Common outage/turbine: June 20 – June 26 (Turbine required 5 days to cool down to standstill)
- Main outcomes:
  - No surprises: grate as expected and refractory in better condition than expected
  - Works carried out within budget
  - 1 Red Card issued for squeezing past an operational telehandler



**Operations 2<sup>nd</sup> Quarter Review: Safety overview**



Days Since Last Lost Time Incident (LTI)		
<b>Rookery</b>	212	30/11/22

## Consents and Community: 2<sup>nd</sup> Quarter Review

---

1. Section 106 compliance
  1. Community Trust Fund: £77k in 2023
  2. Electricity Subsidy Scheme
  3. Reporting to Councils: Up to date (employment/travel plans)
  4. Rookery North circular path
2. Visitor Centre
3. Business Rates
4. Part-time opportunities
  1. Receptionist
  2. Visitor centre guides



# Community Liaison Meeting Rookery Pit - Bedford Environment Agency Update 24 July 2023



**Neil Goudie**  
East Anglia Area Installations Technical Leader



## EA 2025

CREATING A  
BETTER PLACE



# What has happened?

- Emission Data Assessment
- Unannounced Visit
- Preparation of future permit requirements.

# 2022 Permit Performance

- 2 x CCS 3 Emission Limit Value Breaches
- No further permit condition breaches.
- No significant enforcement action required.

**Band B Performer on a A-F Scale.**

# Compliance & Enforcement

- Compliance Assessment – Using Common Classification Scheme (CCS).
- Enforcement – Using Enforcement & Civil Sanctions Guidance with Offence Response.
  - Operator Performance Benchmarking
    - Enforcement Moderation

# Schedule 5 Notifications

- Any potential pollution events must be formally notified to the Environment Agency.
- An Emission Limit Value breach is the main reason for reporting.
- Assessment will take into account foreseeability; historical compliance and operator mitigation.

# Quarterly Emission Assessment

October 2022 to March 2023

- Periodic and Continuous emissions to air assessed as compliant.
- Bottom Ash and Air Pollution Control Residues assessed as compliant.
- No Notifications or Abnormal Operations assessed as non-compliant.
- No other permit condition breaches.

# Operator Monitoring Assessment

## Purpose:-

- **Continuous & Periodic Monitoring is being done to the appropriate permit standards.**
- **Continuous Monitoring calibration functions and drift calculations are being used correctly by the operator.**
- **Monitoring of equipment drift is being recorded correctly by trained on-site personnel and actioned where appropriate.**



# What Next?

- Operator Monitoring Assessment Audit
- Due in Late Summer

Any Questions?